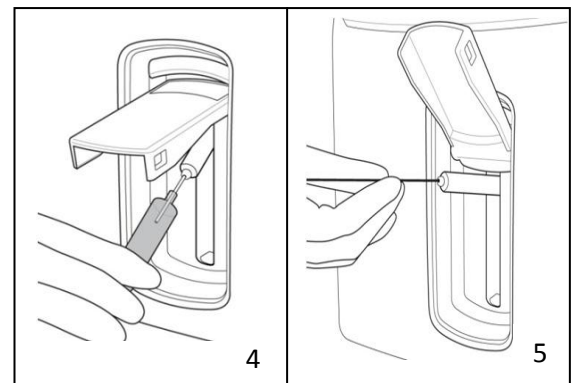


# i-Smart 30 VET

ELECTROLYTE ANALYZER

## How to run a Sample

1. Check that the analyser is in "Ready" status.
2. Lift up the sample cover and select the animal species.
3. "Introduce sample now" is displayed. (To cancel the test, lower the sample cover to the original position before pressing "Aspirate".)
4. For a venous sample (whole blood, serum or plasma) mix the sample and immerse the end of the probe into the blood tube. Be careful not to introduce air bubbles, clots or foreign substances into the analyser when sampling.
5. For a capillary sample, lift the sample cover up all the way and carefully insert the capillary into the septum. Do not allow any gap between the capillary and the septum to avoid air being sampled with the blood.
6. When the probe is immersed in the blood sample, press "Aspirate" to begin sampling.
7. When the aspiration is complete, "Remove sample now" will be displayed. Remove the sample and close the sample cover when prompted.
8. Enter the sample number, operator ID and patient details using the keyboard or barcode reader.
9. When sample analysis is complete, the results will be displayed with reference ranges. Results within the reference range are shown in blue, whereas results outside the range are red (with ↑ or ↓ arrows). Results are also printed out on the internal printer.



**If you require assistance please contact your Woodley Equipment Area Account Manager or Woodley Technical Support Dept. on +44 (0)1204 669033**