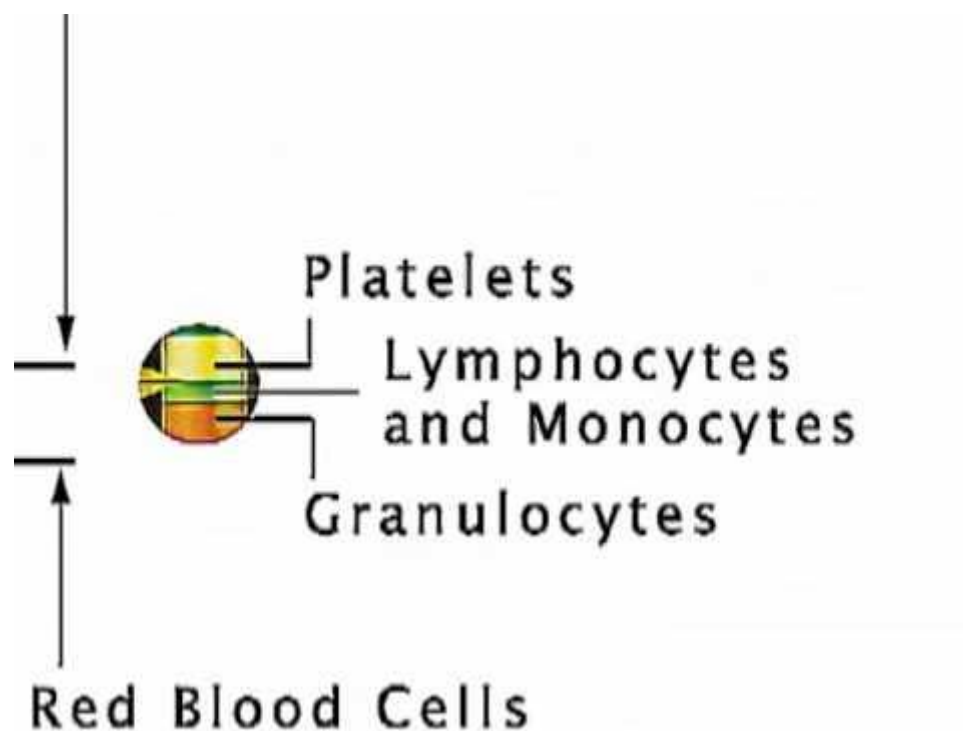


QBC Tubes

The technology at the heart of QBC® Europe's line of haematology products is its one-of-a-kind line of tubes. These QBC tubes contain all necessary staining reagents, as well as several other patented technologies designed to provide unparalleled ease and accuracy when used with analysers such as the [QBC STAR](#) and the [QBC Autoread Plus](#).

QBC Technology



Tube Guide

Star Tube	
Which analysers use this tube?	QBC STAR
Sample size?	70 µl
What type(s) of blood can be used with this tube?	Capillary or venous
What type of stopper does it use?	Pre-inserted, ventilated stopper
How is the float inserted into the tube?	Float is contained in the STAR Tube cap, and is inserted by twisting the cap
Anticoagulant included in tube?	Yes



QBC AccuTubes

Which analysers use this tube?	QBC Autoread Plus
Sample size?	70 µl
What type(s) of blood can be used with this tube?	Capillary or venous (using QBC pipetter)
What type of stopper does it use?	Pre-inserted, ventilated stopper
How is the float inserted into the tube?	Floats are externally contained in the AccuTube packaging within soft grip holders. Slide the AccuTube through the soft grip holder, and the float will be inserted.
Anticoagulant included in tube?	Yes



QBC Capillary Tubes

Which analysers use this tube?	QBC Autoread Plus and Autoread
Sample size?	60 µl
What type(s) of blood can be used with this tube?	Capillary
What type of stopper does it use?	External closure, located in test tray well
How is the float inserted into the tube?	Floats are external and located in test tray well. Floats can be inserted using plastic forceps or using a gloved hand.
Anticoagulant included in tube?	Yes



QBC Venous Tubes

Which analysers use this tube?	QBC Autoread Plus and Autoread
Sample size?	111 µl
What type(s) of blood can be used with this tube?	Venous (using the QBC pipetter)
What type of stopper does it use?	External closure, located in test tray well
How is the float inserted into the tube?	Floats are external and located in test tray well. Floats can be inserted using plastic forceps or using a gloved hand.
Anticoagulant included in tube?	No

